

# DUNLIN II # 44

## TOWNES AT HERSHEY ROAD

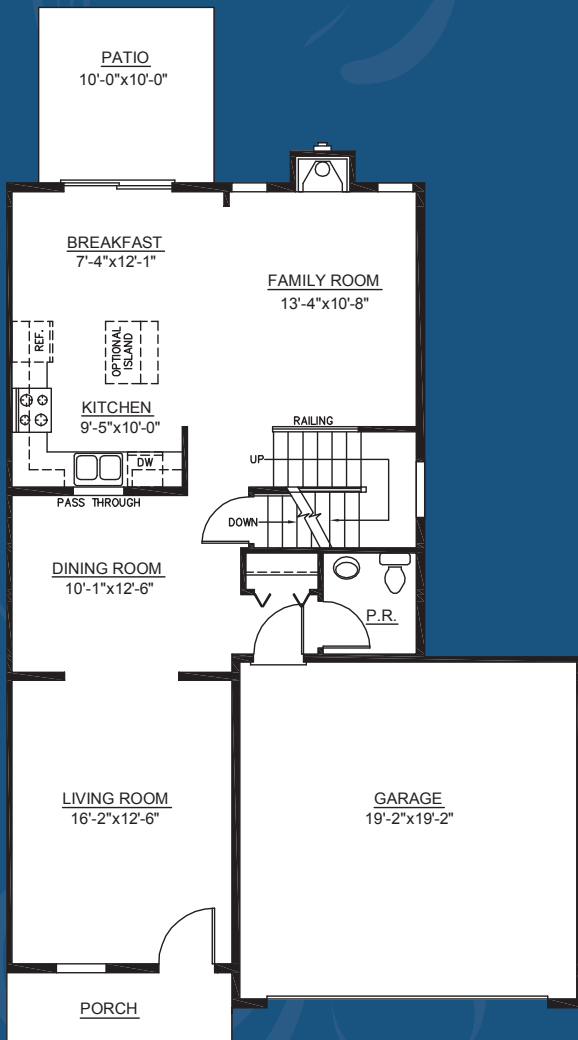
APPROXIMATELY 1,968 SQ. FT. END UNIT

FOUR PIECE MASTER BATH

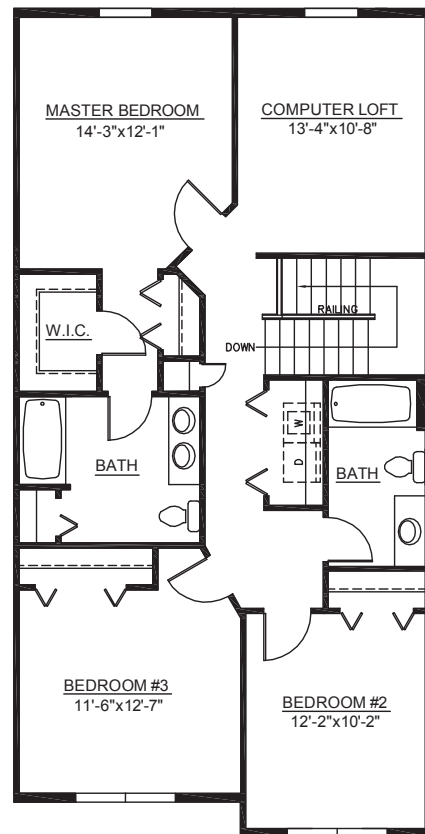
OPEN COMPUTER LOFT, OR OPTIONAL  
FOURTH BEDROOM

EAT-IN KITCHEN W/ISLAND  
AND SEPARATE DINING ROOM

TWO CAR GARAGE/FULL BASEMENT



FIRST FLOOR



SECOND FLOOR



This sheet is for illustrative purpose only and not part of a legal contract. Plans are subject to modification. Room measurements are approximate. Individual unit elevations are based on an entire building and may vary. Optional items indicated are available at additional cost. Refrigerator, washer and dryer are not included. Illustration is artist's conception and may vary in precise detail. (TOWNES AT HERSHEY ROAD) (7-20-10)